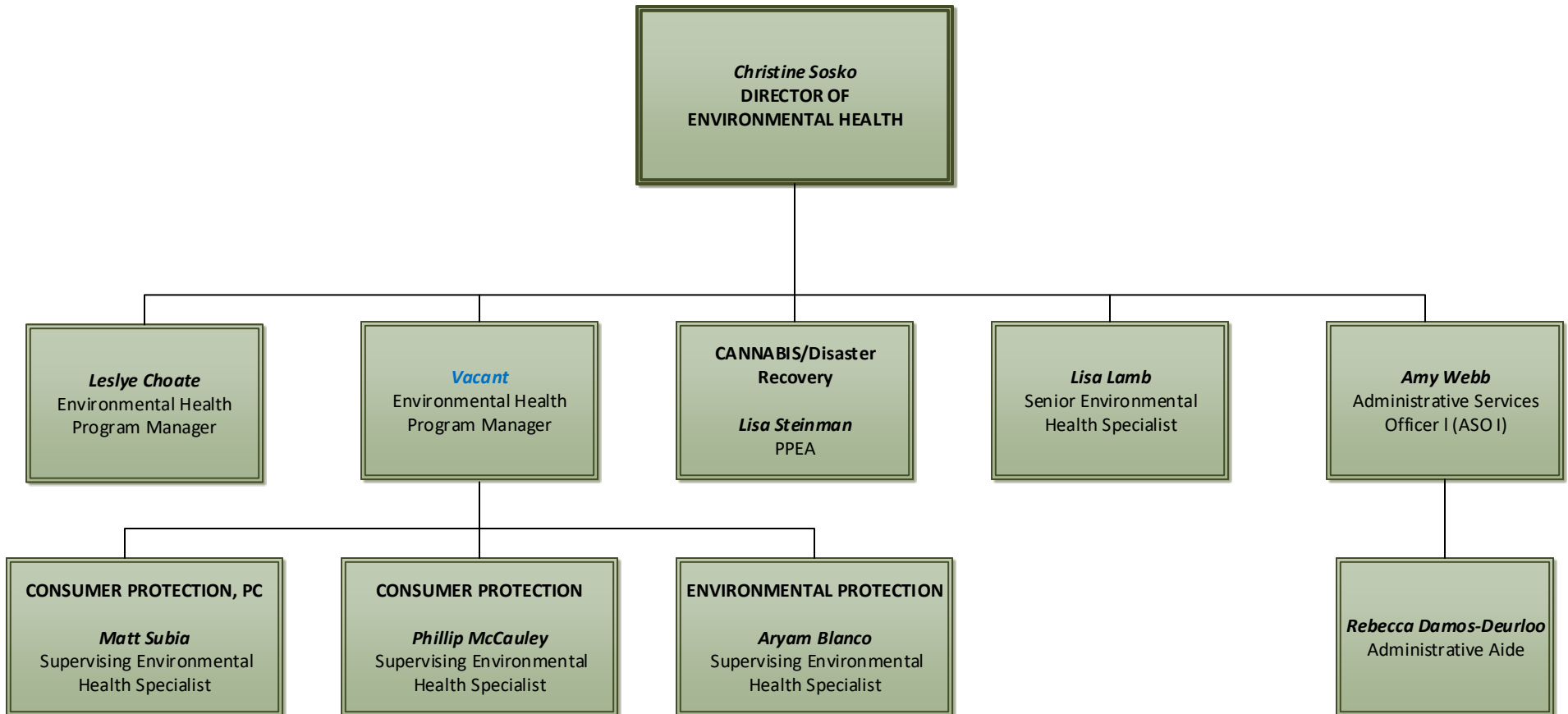




ENVIRONMENTAL HEALTH

Director: Nolan Sullivan
Issue Date: May 1, 2025
(Organizational Chart)



Environmental Health

- Christine Sosko, Director of Environmental Health
 - Kathleen Haas, Dairy Inspector
 - Leslye Choate, Environmental Health Program Manager
 - Consumer Protection, PC, Matt Subia, Supervising Environmental Health Specialist
 - Consumer Protection, Phillip McCauley, Supervising Environmental Health Specialist
 - Environmental Protection, Aryam Blanco, Supervising Environmental Health Specialist
 - Vacant, Environmental Health Program Manager
 - Cannabis/Disaster Recovery and CLPPP, List Steinman, PPEA
 - Lisa Lamb, Senior Environmental Health Specialist
 - Debris Task Force/Emergency Preparedness, Amy Webb, Administrative Services Officer I (ASO I)
 - Vital Statistics, Gloria Vigil, Customer Support Department Analyst
 - Rebecca Damos-Deurloo, Administrative Aide